



Norwegian
Meteorological
Institute

APPLICATE

hands-on session concerning data in NetCDF/CF

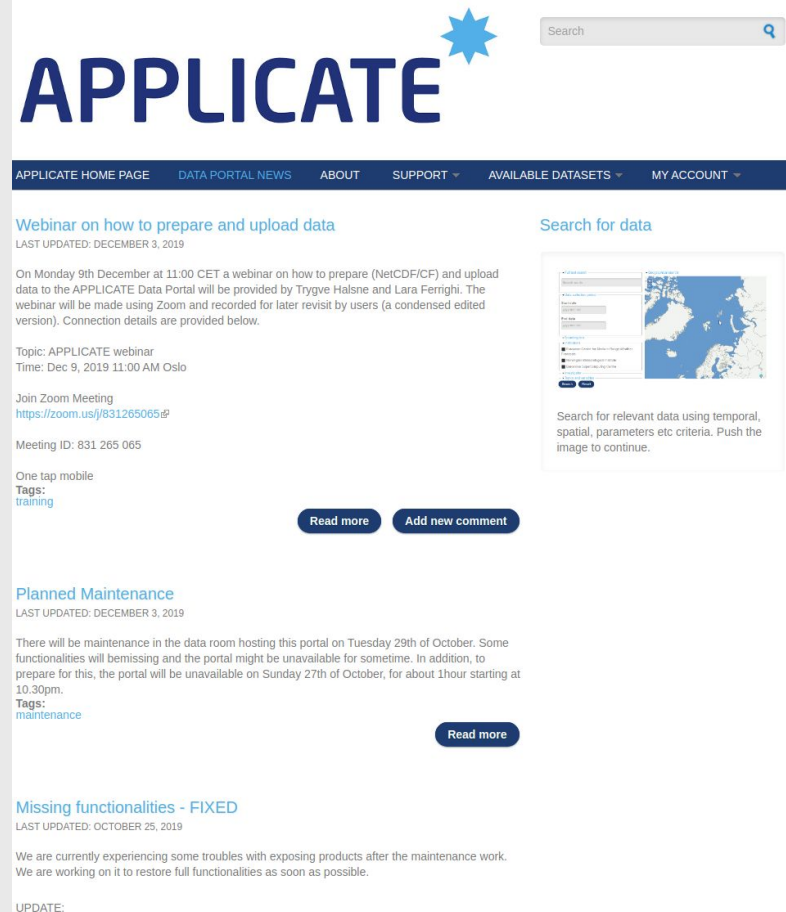
Trygve Halsne – Research Scientist
Department of Remote Sensing and Data Management
Norwegian Meteorological Institute

Lara Ferrighi and Øystein Godøy

09.12.2019

Outline

- Create NetCDF datasets compliant with CF and ACDD
 - By means of Python using [jupyter-notebook](#)
- Check if the files are compliant using online-tools
 - available through [Applicate](#) (requires login)
- How to register and upload your data in Applicate



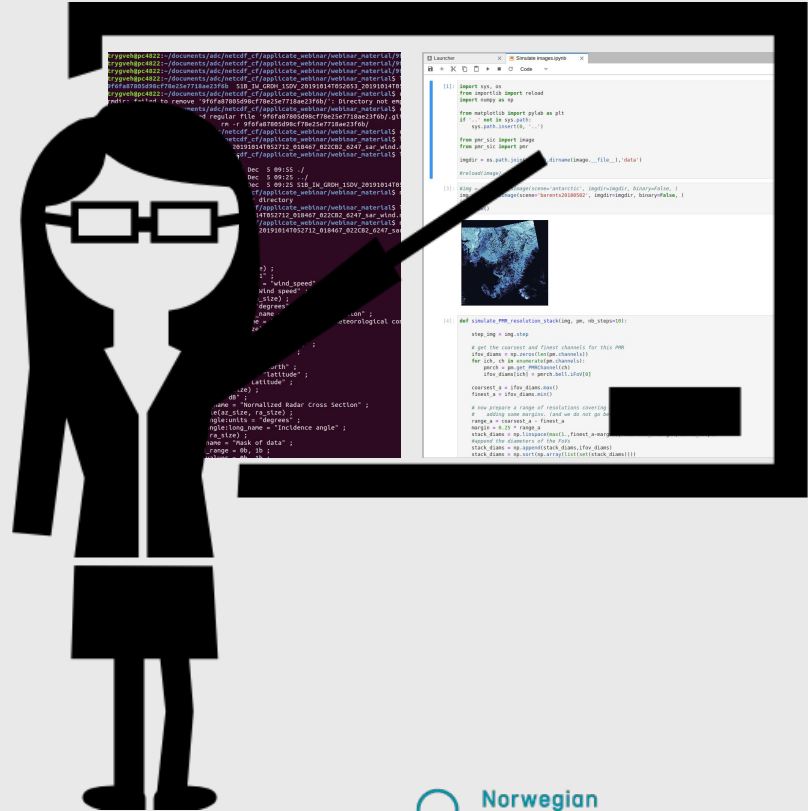
The screenshot shows the Applicate website homepage. At the top, the word "APPLICATE" is displayed in large blue letters next to a blue star icon. A search bar is located in the top right corner. Below the header is a dark blue navigation bar with links for "APPLICATE HOME PAGE", "DATA PORTAL NEWS", "ABOUT", "SUPPORT", "AVAILABLE DATASETS", and "MY ACCOUNT". The main content area features three articles:

- Webinar on how to prepare and upload data**
LAST UPDATED: DECEMBER 3, 2019
On Monday 9th December at 11:00 CET a webinar on how to prepare (NetCDF/CF) and upload data to the APPLICATE Data Portal will be provided by Trygve Halsne and Lara Ferrighi. The webinar will be made using Zoom and recorded for later revisit by users (a condensed edited version). Connection details are provided below.
Topic: APPLICATE webinar
Time: Dec 9, 2019 11:00 AM Oslo
Join Zoom Meeting
<https://zoom.us/j/831265065>
Meeting ID: 831 265 065
One tap mobile
Tags: [training](#)
Buttons: [Read more](#), [Add new comment](#)
- Planned Maintenance**
LAST UPDATED: DECEMBER 3, 2019
There will be maintenance in the data room hosting this portal on Tuesday 29th of October. Some functionalities will be missing and the portal might be unavailable for sometime. In addition, to prepare for this, the portal will be unavailable on Sunday 27th of October, for about 1hour starting at 10.30pm.
Tags: [maintenance](#)
Button: [Read more](#)
- Missing functionalities - FIXED**
LAST UPDATED: OCTOBER 25, 2019
We are currently experiencing some troubles with exposing products after the maintenance work. We are working on it to restore full functionalities as soon as possible.
UPDATE:

On the right side of the page, there is a "Search for data" section with a search bar and a map of Norway. Below the map, there is a text box that says "Search for relevant data using temporal, spatial, parameters etc criteria. Push the image to continue."

Creating NetCDF/CF data

- Clone the [jupyter-notebook](https://github.com/9f6fa87805d98cf78e25e7718ae23f6b.git)
 - git clone
<https://gist.github.com/9f6fa87805d98cf78e25e7718ae23f6b.git>
- We will use this for the rest of the webinar



How to publish the dataset in the portal

In order to publish datasets, a user must

- register with the data portal
 - <https://applicatemet.no/user/register>
- request an account on the applicate PPI (Note: separate user, ie. not the same as for the web page)
 - <https://applicatemet.no/node/14>
- When access is proven, use scp to upload data to the applicate PPI
- The data will be picked up and moved to THREDDS
- Keep us informed during this process
 - <https://applicatemet.no/contact>

Questions?